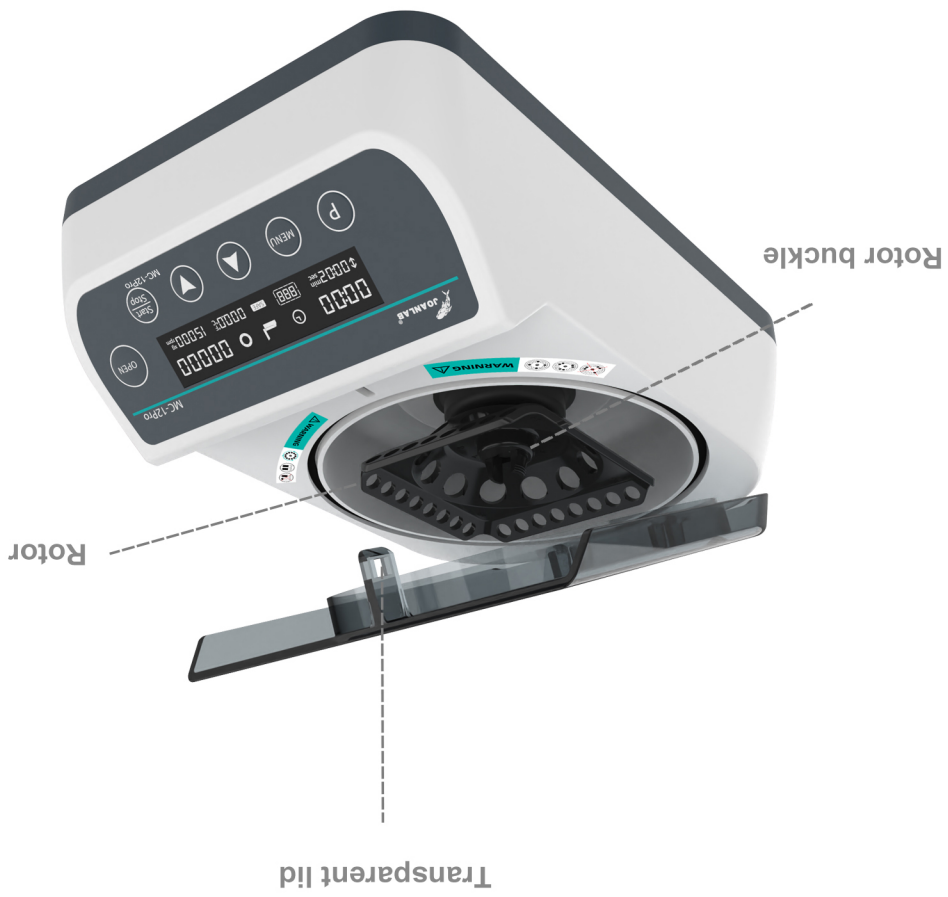




Tel: 86-0572-2266665  
 Web: www.joanlab.cn  
 E-mail: info@joan-lab.com  
 NO.181 Gangfeng Road, Wuxing District, Huzhou City,  
 Zhejiang Province, China

## User manual

- 2 -



### III: Product introduction

- 1 -




### II: Product overview

JOANLAB high speed mini centrifuge adopts international advanced design concepts and manufacturing technology, its appearance is smooth and beautiful, the structure is compact and firm, it has the advantages of high versatility, simple operation and so on, a rare instrument for scientific research experiments. The mini centrifuge is mainly used to separate the solid particles from the liquid in the suspension. Or to separate two different densities of liquid emulsion, it can also be used to remove the liquid in the wet solid.

### I: Product brief

## IV: Product data

Model	MC-10pro	MC-12pro	MC-15pro
Product name	High speed mini centrifuge		
Product Image			
Control Method	PWM electronic speed regulation		
LCD display	YES		
Max RCF	6780xg	9660xg	14100xg
Maximum RPM	10000rpm±5%	12000rpm±5%	14500rpm±5%
Rotor capacity	0.2/0.5/1.5/2ml*12 + 0.2ml*8*4		
Acceleration time/ Braking time	<12s / <15s		
Noise at maximum speed	≤50db(A)	≤56db(A)	≤60db(A)
Input power	35W	45W	55W
Voltage/input voltage	AC100-240V / DC24V		
Allowable ambient temperature and humidity	5~40°C, 80%RH		
Product size (MM)	270*180*105		
Packing size (MM)	357*217*137		

## V: Correct usage

/// Basic usage

### Application

> Mainly used to separate solid particles in suspension from liquid.

- 3 -

## Usage

> Widely used in experiments in various universities, environmental protection, sanitation, epidemic prevention, chemical industry, tap water, medical treatment and other units.

### Steps for usage

- > Turn on the switch
- > Press the OPEN key to turn on the switch and put in the sample
- > Press the MENU key to adjust the time, speed, and safety temperature
- > Press STAT/STOP key to start/stop
- > Press the P key to remember multiple groups of modes, and f retrieve the mode to run
- > Long press the P key for gradient mode operatio

### ▲ Instrument using environment

- > Indoor use
- > Altitude: ≤2000m
- > The working temperature range of the instrument is +5°C~+40°C
- > The applicable temperature range of the instrument is ≤80%
- > There is no vibration and airflow that affect performance around
- > There is no conductive dust, explosive gas or corrosive gas in the surrounding air
- > Keep a safety distance of 10cm before and after the instrument is working

### ▲ Safety Precautions

- > It is strictly forbidden to unplug and plug the power connector and toggle the power button when the hands are wet with liquid!
- > It is strictly forbidden to unplug the power plug when the instrument is live!
- > It is strictly forbidden to maintain and clean the instrument when it is powered on!
- > It is strictly forbidden to install the instrument on an uneven, swaying and vibrating work surface!

- 4 -

## Delivery list

- > Mini centrifuge
- > Rotor
- > Adapter
- > Power cord
- > Instruction manual



- 5 -

## Product conformity certificate

Product Name : High speed mini centrifuge

Model number :  MC-10pro  MC-12pro  MC-15pro

Production date : \_\_\_\_\_

Manufacturer : Ningbo Yinzhou Joan Lab Equipment Co., Ltd.

- 6 -