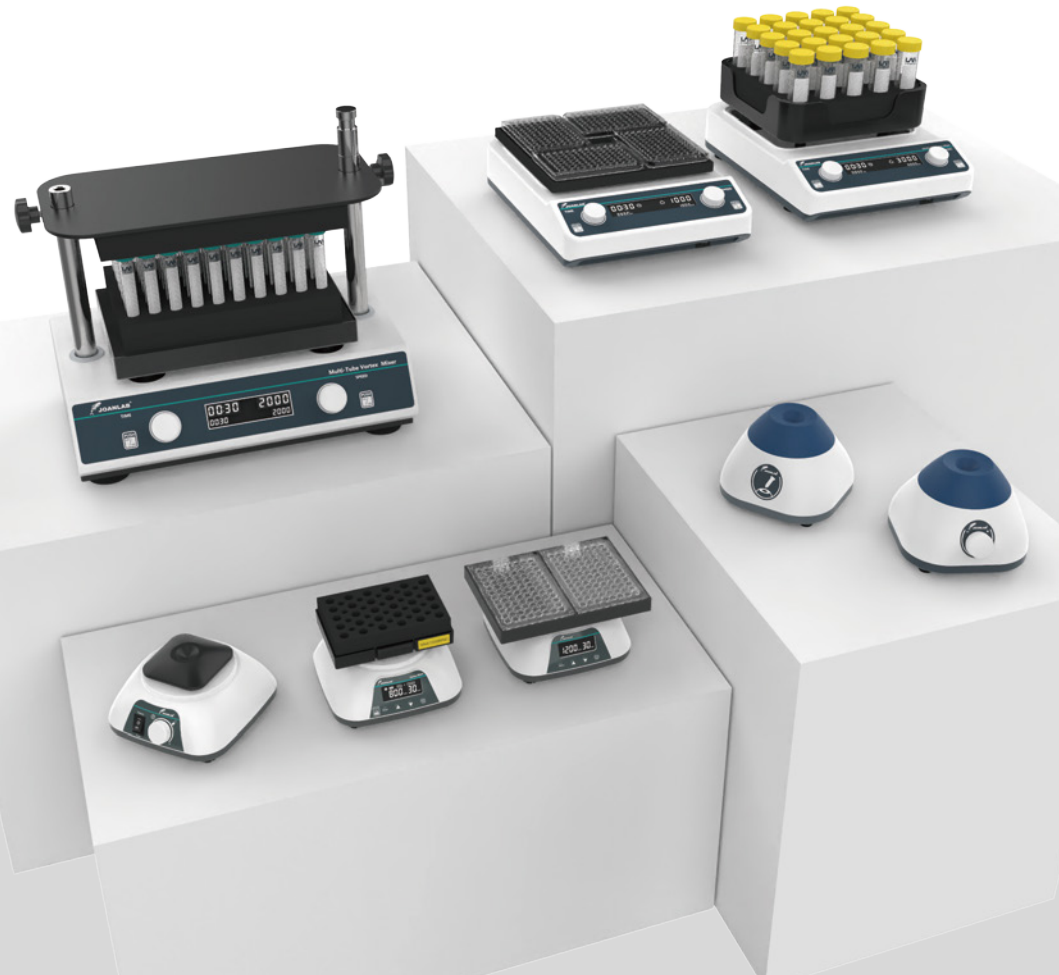
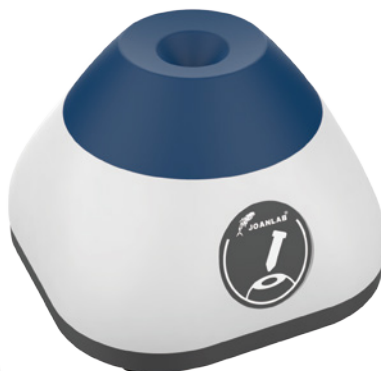
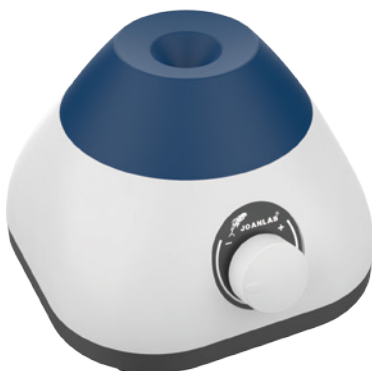


SHAKER&MIXER



Mini Vortex Mixer



Stepless speed regulation
Wide speed range



High quality and colorful
silicone



Press to start / Compact body



Brushless motor / Durable

TECHNICAL DATA

Model	VM-300	VM-300S	Shell Protection Level	IP42	
Control Mode	Constant speed	Knob	Power	12W	
Motor	Brushless motor		Voltage	100-240V, 50/60Hz	
Amplitude	4.5mm (Circular oscillation)		Product Size	93*93*72mm	100*93*72mm
Maximum Sample Processing Capacity	50ml		Allowable Ambient Temperature	5-40°C, 80%RH	
Speed Range	3000rpm	0-3000rpm	Gross / Net weight	0.55/0.36kg	0.56/0.37kg

Vortex shaker



Laser induction start



Adjustable speed



Large mixing area

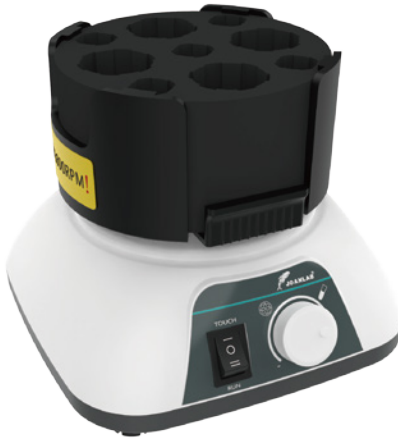


Suitable for a variety of containers

TECHNICAL DATA

Model	VM-400	VM-400Max
Control Mode	Digital display+Button	Digital display+Button+Laser Sensoring
Motor Type	Brushless motor	
Speed	100 - 3000 rpm	
RPM Increment	100rpm	
Amplitude	4mm (Circular Oscillation)	
Direction of Rotation	Clockwise	
Allowed Ambient Humidity Temp.	5~40°C, 80%RH	
Voltage	DC12V 2A	
Power	20W	
Dimension (mm)	150*150*45mm	

Vortex Mixer With Multifunction



Ultra-low body, stable operation



Various fixtures, large handling capacity



Brushless motor with strong power



Touch / Run, easy to switch

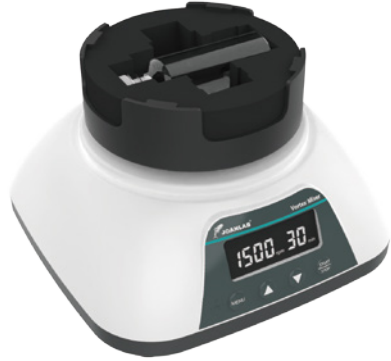
TECHNICAL DATA

Model	VM-500S	VM-500Pro	Speed Range	Touch: 0-3000rpm	Touch: 0-3000rpm
Operating Mode	Touch / Run			Run: 200-3000rpm	Run: 100-3000rpm
Control Mode	Knob	Digital display & Button	Timing / Time	No	1min - 8h
Display	No	LCD	Shell Protection Level	IP21	
Motor	Brushless motor		Voltage	20W	
Amplitude	4.5mm (Circular oscillation)		Power	DC12V	

Multifunctional Mixer Adapted Module

Model	Picture	Image	Module application scope
VM501			Centrifuge tube / Test tube
VM502			Flask / Multi tube
VM503			Φ12mm Blood collection tube * 21
VM504			5ml/ 15ml Centrifuge tube * 12
VM505			50ml Centrifuge tube * 4 5ml/ 15ml Centrifuge tube * 5
VM506			0.2ml Centrifuge tube * 96 96 well plate
VM507			0.5ml Centrifuge tube * 20 1.5 / 2.0ml Centrifuge tube * 30
VM508			Cell culture plate

Vial Vortex Mixer



Various modules available



Brushless motor with strong power

TECHNICAL DATA

Model	VM-550X
Motor Type	Brushless motor
Speed	100 - 2000rpm
RPM Increment	100rpm
Module capacity	VM551 Vial $\phi 22*60$ or $\phi 26*65$ VM552 Vial $\phi 16*3$ $\phi 18*2$ VM553 Vial $\phi 22*2$ $\phi 28*2$
Module Material	EVA modules
Timing	
Allowed Ambient Humidity Temp.	1min - 8h
Voltage	5 ~ 40 C 80%RH
Power adapter	DC12V
Power (W)	20W
Dimension (mm)	155*150*90

Roller Mixer



Timing function



Anti - lock design, more convenient



Adjustable speed

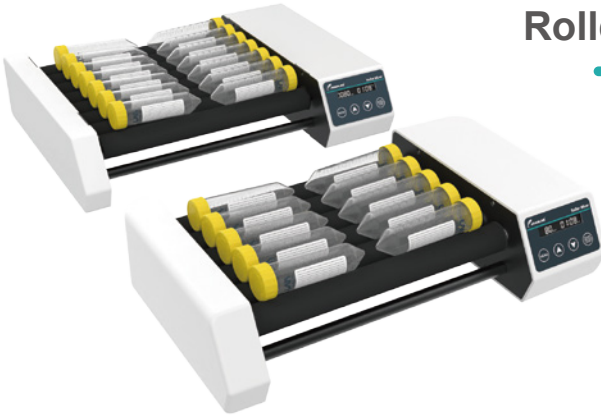


Brushless motor with strong power

TECHNICAL DATA

Model	RM-6	RM-6Pro	RM-8Pro
Motor Type	Brush motor	Brushless motor	Brushless motor
Display	/	LCD	LCD
Speed		20 - 80rpm	
Number Of Rollers	6	6	8
Roller Length (mm)		280	
Roller Center Distance (mm)		34	
SPECS		φ 6 - 34mm	
Timing	/	1min - 23h59min	1min - 23h59min
Allowed Ambient Humidity Temp.		5 ~ 40 C 80%RH	
Voltage		AC 100 - 220V, 50/60Hz	
Power		25W	
Dimension (mm)	440*255*105	440*255*105	430*320*100

Roller Mixer



Timing function



Anti - lock design, more convenient



Adjustable speed



Brushless motor with strong power

TECHNICAL DATA

Model	RM-6H	RM-8H
Motor Type	Brushless motor	
Display	LCD	
Type	Horizontal rolling	
Speed	20 - 80rpm	
Number Of Rollers	6	8
Roller Length (mm)	280	
Roller Center Distance (mm)	34	
SPECS	φ 6 - 34mm	
Timing	1min - 23h59min	
Allowed Ambient Humidity Temp.	5 ~ 40 C 80%RH	
Voltage	AC 100 - 220V, 50/60Hz	
Power	25W	
Dimension (mm)	440*255*105	430*320*100

Roller Mixer



Timing function



Anti - lock design, more convenient



Adjustable speed



Brushless motor with strong power

TECHNICAL DATA

Model	RM-4max
Motor Type	Brushless motor
Type	Horizontal rolling
Speed	20 - 80rpm
Number Of Rollers	4
Roller Length (mm)	280
Roller Center Distance (mm)	68
SPECS	φ 45 - 100mm
Timing	1min - 23h59min
Allowed Ambient Humidity Temp.	5 ~ 40 C 80%RH
Voltage	AC 100 - 220V, 50/60Hz
Power	25W
Dimension (mm)	440*255*105

Long Axis Rotating Mixer Shaker



Timing function



Six different modules

TECHNICAL DATA

Model	RML - 80	RML - 80Pro
Motor	Brush motor	Brushless motor
Control Mode	Knob	Digital display & Button
Type	Non-stop run	Non-stop run / Timing
Speed	20 - 80rpm	
Timing	/	1min - 23h59min
Power	25W	
Dimension (mm)	425*100*125	

MODULES



Composite module

Centrifuge tube : 50ml*4+15ml*10+2ml*8
Blood collection tube : 10ml*10+2/5ml*8



RML-801

Centrifuge tube : 50ml*12



RML-802

Centrifuge tube : 15ml*23
Blood collection tube : 10ml*23



RML-803

Centrifuge tube : 1.5/2.0ml*28
Blood collection tube : 2.0/5.0ml*28



RML-804

Centrifuge tube : 15ml*16
Blood collection tube : 10ml*16



RML-805

Centrifuge tube : 50ml*12

Rotary Rotating Mixer Shaker



Timing function



Large handling capacity



Adjustable angle



Brushless motor with strong power

TECHNICAL DATA

Model	RMO - 80	RMO - 80Pro
Motor	Brush motor	Brushless motor
Control Mode	Knob	Digital display & Button
Type	Non-stop run	Non-stop run / Timing
Speed	20 - 80rpm	
Angle Range	40° - 80°	
SPECS	Centrifuge tube : 50ml*8 or 15ml*16 or 1.5ml/2ml*24 Blood collection tube : 10ml*16 or 2ml/5ml*24	
Timing	/	1min - 23h59min
Allowed Ambient Humidity Temp.	5 ~ 40 C 80%RH	
Voltage	AC 100 - 220V, 50/60Hz	
Power	20W	
Dimension (mm)	230*180*265mm	

Microplate oscillator



Timing function

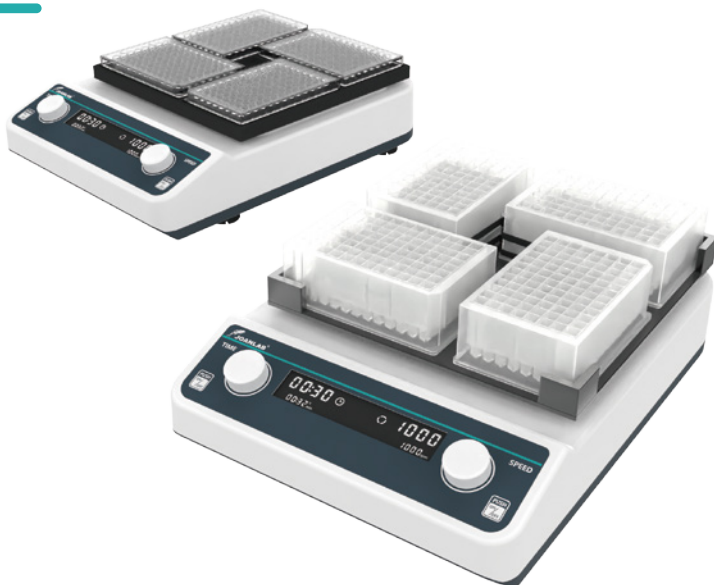


Brushless motor with strong power

TECHNICAL DATA

Model	VM - 500 - 1P	VM - 500 - 2P
Motor Type	Brushless motor	
Horizontal Gyration Amplitude	4mm	
Speed	100-1200rpm	
RPM Increment	100rpm	
Timing	1min - 8h	
Handling range	ELISA Plate / Tissue Culture Plate / 96-well plate	
Allowed Ambient Humidity Temp.	5 ~ 40 C 80%RH	
Voltage	DC12V	
Power	20W	
Dimension (mm)	155*150*90	180*150*90

Microplate oscillator



Timing function

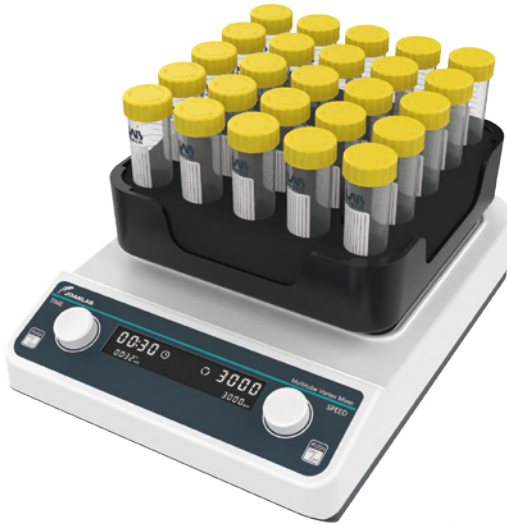


Brushless motor with strong power

TECHNICAL DATA

Model	VM - 600	VM - 600D
Motor Type	Brushless motor	
Horizontal Gyration Amplitude	3mm	
Speed	500 - 1200rpm	
RPM Increment	10rpm	
Timing	1min - 8h	
Handling Range	ELISA Plate/Tissue Culture Plate *4	ELISA Plate/Deep Tissue Culture Plate *4
Allowed Ambient Humidity Temp.	5 ~ 40℃ 80%RH	
Voltage	AC 110 - 220V	
Power	20W	
Dimension (mm)	355*260*95	355*260*105

Multi Tube Vortex Mixer



Timing function

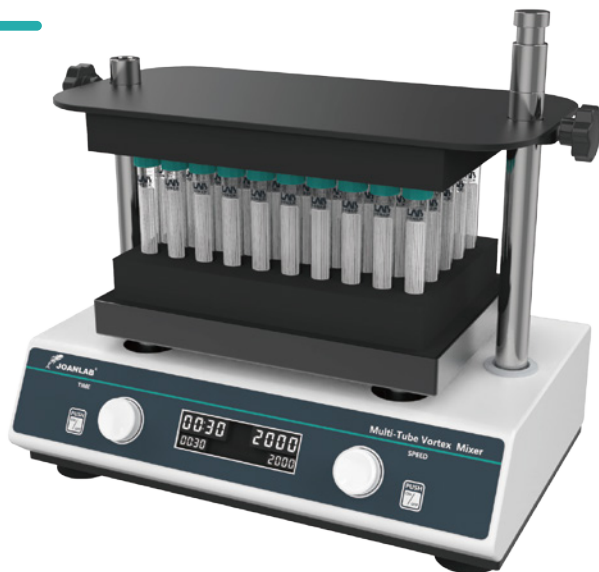


Large handling capacity

TECHNICAL DATA

Model	VM - 600Max
Motor Type	Brushless motor
Horizontal Gyration Amplitude	4mm
Speed	1500 - 3000rpm
RPM Increment	10rpm
Timing	1min - 8h
Handling Range	<p>Model1(VM601) Centrifuge tube : 50ml*25+15ml*16</p> <p>Model2(VM602) Centrifuge tube : 15ml*49 / Blood tube :10ml*49</p> <p>Model3(VM603) Blood tube : 2/5ml*49</p> <p>Model4(VM604) Centrifuge tube : 1.5/2ml*81</p>
Allowed Ambient Humidity Temp.	5 ~ 40 C 80%RH
Voltage	AC 100 - 220V, 50/60Hz
Power	30W
Dimension (mm)	355*260*145

Multi Tube Vortex Mixer



Smooth start, stable operation



Large handling capacity



Brushless motor with strong power



Touch / Run, easy to switch

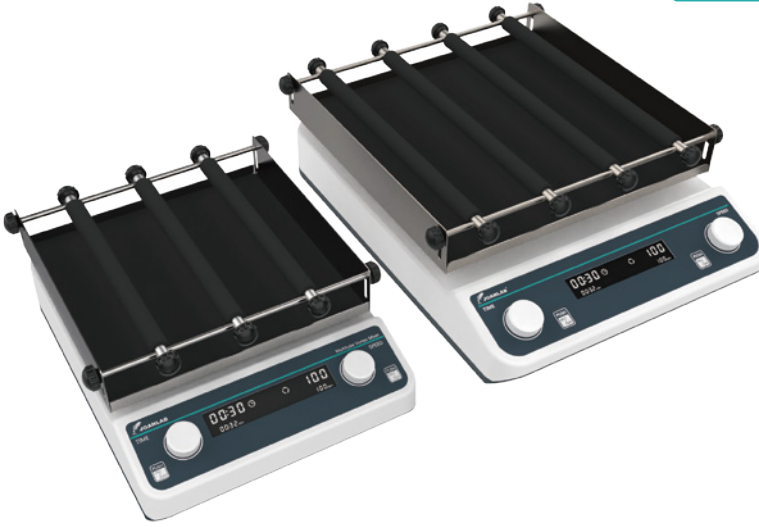
TECHNICAL DATA

Model	VM800Pro
Operating Mode	Run
Speed Range	500 ~ 3000rpm
Amplitude	4mm Horizontal swing
Timing Range	1min ~ 24h
Maximum Load	4.5kg
Power	100W

ADAPTATION MODULE DETAILS

Model	VM801	VM802	VM803
Specification	(Centrifuge tube) 50ml*15	(Centrifuge tube) 15ml*50 (Blood tube) 10ml*50	(Centrifuge tube) (1.5/2ml)*72 (Blood tube) 2/5ml*72
Size(mm)	260*180*50	260*180*50	260*180*50
Aperture	27-31	14-17	9-11

Orbital Shaker



Adjustable speed



Timing function

TECHNICAL DATA

Model	OS-20Pro	OS-40Max	LS-40Max
Speed	40-200rpm		
Plate Size	250*250mm	320*320mm	320*320mm
Orbit Diameter	20mm	20mm	Linear and reciprocating 20mm
Timing Range	1min-23h59min		
Maximum Load	2kg	5kg	5kg
Voltage	AC100-240V 50/60Hz		
Dimensions	260*355*135mm	330*435*140mm	340*435*140mm

Fix Plate Shaker/Rocking Shaker



Brushless motor



Suitable for a variety of containers

TECHNICAL DATA

Model	OS - 20F	RS - 20Pro
Type	Circular orbital	Work Plate Rocking
Plate Size	250*250	250*250
Tit Angle	/	7°
Orbit Diameter	20	/
Speed	40-200rpm	10 - 80rpm
Timing	1min - 23h59min	1min - 24h
Max Load	2kg	2kg
Allowed Ambient Humidity Temp.	5 ~ 40 C 80%RH	5 ~ 40 C 80%RH
Voltage	AC 100 - 240V	AC 100 - 240V
Power	30W	25W
Dimension (mm)	355*260*100	355*260*135

Plate Circumference Shaker



Timing function



Multiple containers

TECHNICAL DATA

Model	SK-20
Motor Type	Brushless motor
Plate Size	200*200mm
Maximum Load	1.2kg
Speed Range	40-200rpm
Stepping	5rpm
Timing Range	1min-24h
Type	Circular orbital
Orbit Diameter	20mm
Voltage	20W
Power	AC100-240V
Dimensions	235*220*95mm

Plate circumference/ Linear shaker



Brushless motor



Suitable for a variety of containers

TECHNICAL DATA

Model	OS - 40F	LS - 40F
Type	Circular orbital	Linear & reciprocating
Plate Size	320*320	320*320
Orbit Diameter	20	20
Speed	40-200rpm	40 - 200rpm
Timing	1min - 23h59min	1min - 23h59min
Max Load	3kg	3kg
Allowed Ambient Humidity Temp.	5 ~ 40 C 80%RH	5 ~ 40 C 80%RH
Voltage	AC 100 - 240V	AC 100 - 240V
Power	45W	45W
Dimension (mm)	435*330*140	435*330*140

3D Oscillator Shaker



Timing function



Suitable for a variety of containers



Adjustable speed



3D mixing

TECHNICAL DATA

Model	SK - 3D
Type	3D Oscillating
Display	LCD
Tilt Angle	10°
Max Load	0.8kg
Speed	10 - 80rpm
Timing	1min - 8h
Allowed Ambient Humidity Temp.	5 ~ 40 C 80%RH
Voltage	DC 12V
Power	10W
Dimension (mm)	184*184*130